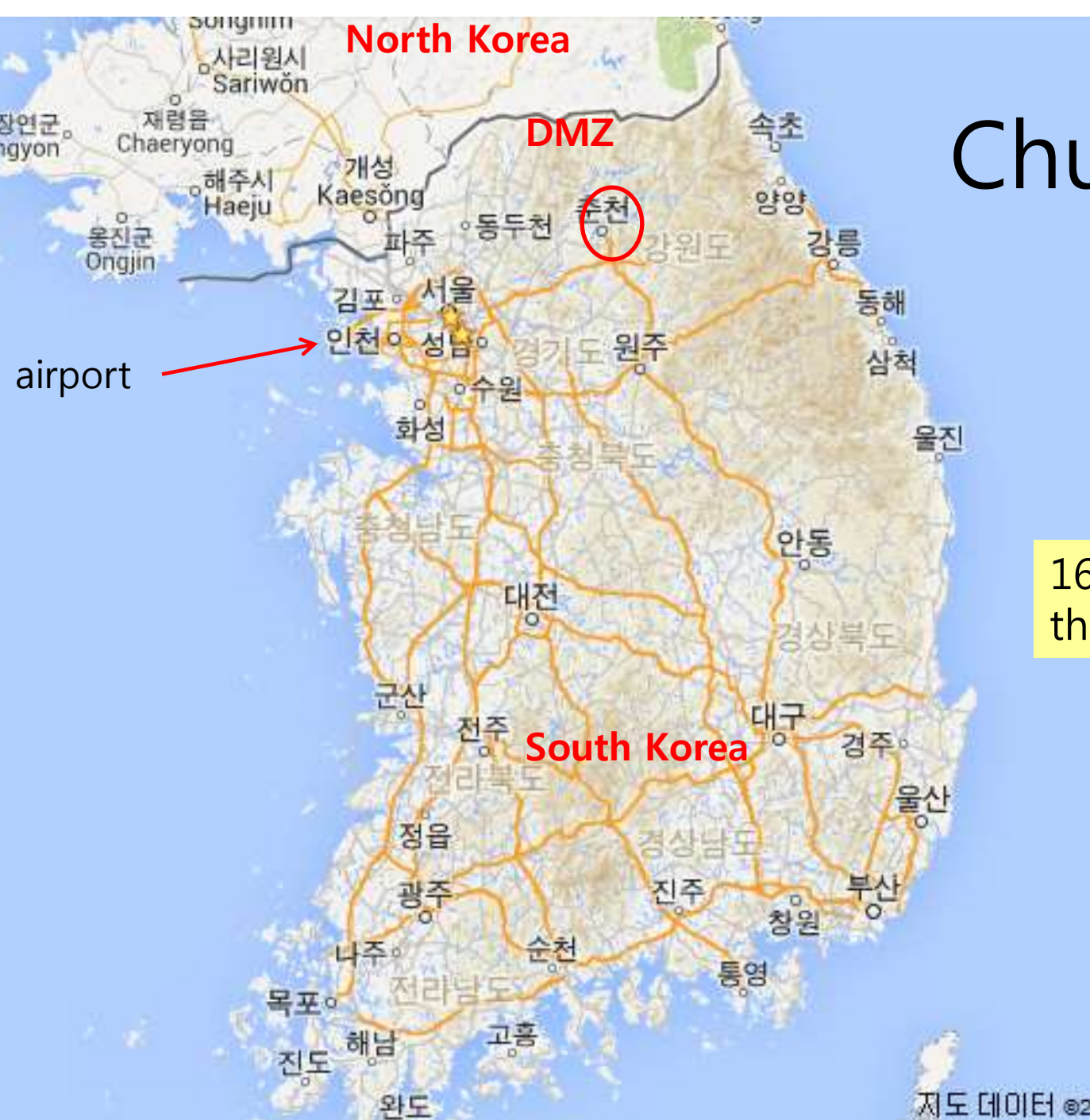


GLEON 17 venue

**Chuncheon, Korea;
'the city of lakes'**





North Korea

DMZ

South Korea

Chuncheon city

airport

160km bus route from the airport

양구

대한민국 강원도 춘천시 춘천

가평

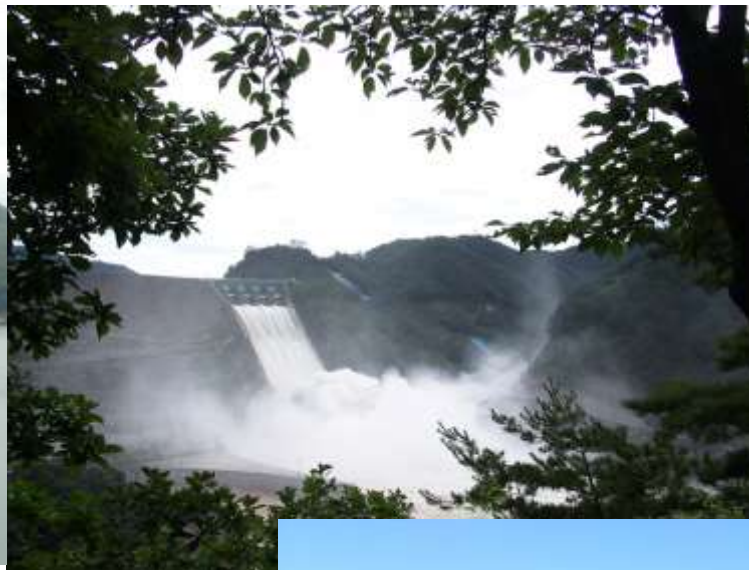
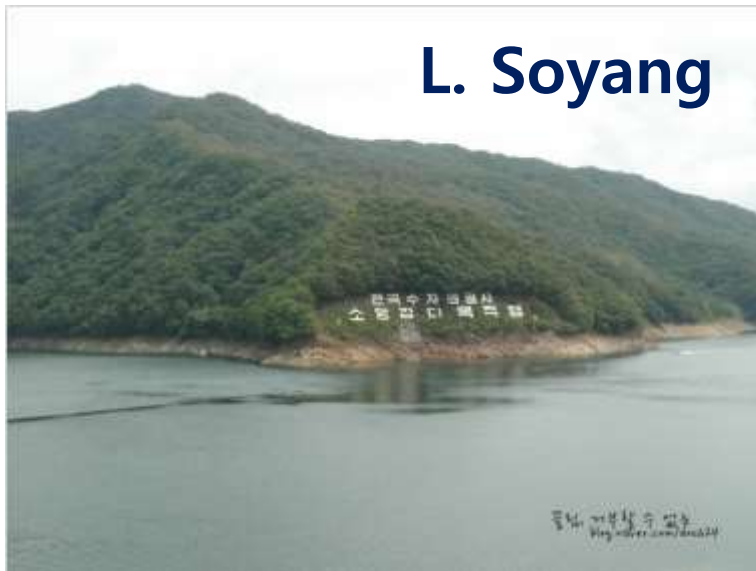
Image © 2012 GeoEye
© 2012 SK Energy
Image © NSPO 2012 / Spot Image
Image © 2012 DigitalGlobe

Google earth

North Han River reservoir system



L. Soyang



L. Chuncheon



L. Uiam



TRANSPOTATION



Seoul Incheon International Airport



Chuncheon city

**2 Hours by airport convenient
direct public limousine BUS line**

- **Every 2 hours**
- **Final stop**
- **\$20**

From Chuncheon bus terminal to the venue

- 5 minutes by taxi
- 4 dollars
- Many taxi are available in front of the bus terminal

VENUE :

KT & G Sangsang Madang Chuncheon Stay Hotel

In Chuncheon city, South Korea

Located at the shore of a reservoir; Lake Euam

http://www.tripadvisor.co.uk/Hotel_Review-g608520-d6816706-Reviews-

[KT G Sangsang Madang Chuncheon Stay-
Chuncheon Gangwon do.html](http://www.tripadvisor.co.uk/Hotel_Review-g608520-d6816706-Reviews-)

Location of the venue

– on the shore of a reservoir (40 km²)



Venue;
KT&G Sangsang Madang Chuncheon Stay Hotel



Additional conference hall is available in the annex building (100 m)

Venue



<http://www.agoda.com/en-gb/sangsangmadang-chuncheon-stay-hotel/hotel/chuncheon-si-kr.html?type=2&CID=1572782&URL=http%3a%2f%2fwww.agoda.com%2fen-ca%2fasia%2fsouth+korea%2fchuncheon+si%2fsangsangmadang+chuncheon+stay+hotel.html&tag=624579&cklg=1>

Halls

1. Lodging room capacity: 160 persons
2. Main Hall: 289 m² (max 200 person w/o table)
3. Middle hall: 78 m² (max 55 person)
4. Small hall #1: 43 m² (15 person with table)
5. Small hall #2: 43 m² (15 person with table)
6. Performance room 87 m² (40 person)
7. Music practice room#1,2,3; 59 m² (30 person)

Total: 1 Main hall + 8 smaller halls

Attractions

- Good scenery
- Excellent bike path around the lake
- Canoe ride

- Convenient drinking environment
- Many karaoke bars in Korea

Food

- Diverse food
- Good combination of vegetable, grain, seafood and meat
- Healthy food



Bizarre foods

- Live raw fish, live octopus
- Fermented skate fish smelling ammonia
- Insect – fried grasshopper, pupa of silkworm
- Various seaweed

Seoul city tour (on your own)

Palaces

Museums

Cheong-kye-chon artificial stream

Mixture of old and modern Korean culture

Many city tour companies



GLEON excursion

Lake Soyang and DMZ tour

Cost 80,000 krw (\$80), including bus, cruise, lunch, dinner, DMZ tunnel entrance fees.

One-day tour

Features

1. Visiting Lake Soyang
2. Visiting DMZ fence
3. Visiting North Korean infiltration tunnel

Lake Soyang

The largest and deepest reservoir in Korea, 60km long, depth 110m



- visiting sensor buoy
- one hour cruise

Visiting DMZ fence



You can feel the tension of border.

Entering infiltration tunnel



One of infiltration tunnels made by North Korea for sneak attack. Thrilling experience of going through the tunnel beneath the border toward North Korea; "**People's Paradise**".
(Don't forget to buy a two-way ticket!)

See you in Korea !